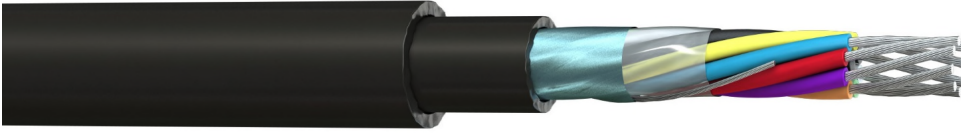


**Description:** 7/0.2mm Def-Stan Multicore Type S Foil Screen, Duct Grade Cable



### Construction

Conductor Material : Tinned Copper, 7/0.2mm  
 Conductor Insulation : Polyvinyl Chloride (PVC)  
 Overall Tape : Polyester  
 Drain Wire : Tinned Copper, 7/0.2mm  
 Overall Screen : Aluminium Foil (100% Coverage)  
 Inner Sheath Material : Polyvinyl Chloride (PVC)  
 Inner Sheath Colour : Black  
 Outer Sheath Material : Low Density Polyethylene (LDPE)  
 Outer Sheath Colour : Black  
 Core Identification :

1	Red	7	Brown
2	Blue	8	Violet
3	Green	9	Orange
4	Yellow	10	Pink
5	White	11	Turquoise
6	Black	12	Grey

### Electrical Characteristics

Nominal Conductor Resistance @ 20°C : < 92 Ω/km  
 Insulation Resistance : > 200 MΩ.M  
 Voltage Rating : 440V rms up to 1600 MHz  
 Test Voltage : 2.5kV for 5 Minutes  
 Current Rating : 1 amps

### Physical Characteristics

Overall Diameter : See Table  
 Min. Bend Radius : 7.5 x OD  
 Temperature Rating : -0°C to 70°C  
 Weight : See Table

### Standards

RoHS3 Compliant : Yes  
 CE Compliant : LVD (2014/35/EU)  
 CPR Classification : Fca (EN50575:2014+A1:2016)  
 Generally Manufactured to : Def Stan 61-12 Part 4

Part No.	Size	No. of Cores	Weight kg/km	O/D mm
39400208D-F00	7-2-8S	8	58	8.6
39400212D-F00	7-2-12S	12	72	9.6